



MANIPAL
ACADEMY of HIGHER EDUCATION
BENGALURU CAMPUS
(Institution of Eminence Deemed to be University)

Placement Report

Academic Year 2025-2026

Start Now



Manipal Institute of Technology Bengaluru

MIT Bengaluru continues to strengthen its position as a premier destination for industry-ready talent, with students securing opportunities across leading organizations in technology, consulting, analytics, product development, financial services, and engineering sectors. Through a combination of academic excellence, industry engagement, and career-focused initiatives, the institute has achieved strong placement outcomes and continues to witness growing recruiter interest. Over 250 corporate recruiters visited the campus to recruit the 2025-2026 batch.

Students were able to seize coveted roles from the prominent MNCs and large Indian companies. Increase in compensation as well as quality of roles was witnessed in the field of software engineering, data science, AI/ML, cybersecurity, analytics, product development, and consulting domains.



Message from the Director

At Manipal Institute of Technology (MIT) Bengaluru, we envision higher education as a catalyst for innovation, technological leadership, and societal impact. As a constituent institution of MAHE, our mission extends beyond academic excellence to building a vibrant ecosystem where industry, academia, research, and entrepreneurship converge to address real-world challenges and shape the future workforce.

As we continue our journey towards becoming a globally recognized centre for technology, innovation, and interdisciplinary research, we deeply value our engagement with industry partners. These collaborations are fundamental to our vision of creating future-ready engineers, technologists, researchers, and leaders who can contribute meaningfully to the rapidly evolving global landscape.

MIT Bengaluru is committed to fostering strategic partnerships that go beyond conventional engagement models. Through collaborative research, technology development, innovation centres, industry-sponsored laboratories, deep-tech initiatives, consulting, executive education, and co-creation of solutions, we seek to build enduring relationships that create value for both industry and academia.

Our growing ecosystem in emerging domains such as Artificial Intelligence, Quantum Technologies, Robotics and Automation, Semiconductor Systems, Cybersecurity, Cloud Computing, and Digital Health offers unique opportunities for organizations to engage with our faculty, researchers, and students in shaping the next generation of technological advancements.

We are grateful to our esteemed corporate partners for their continued trust and confidence in MIT Bengaluru. Your support has been instrumental in strengthening our academic and innovation ecosystem and enabling us to pursue ambitious initiatives that contribute to national priorities and global technological progress.

As we look ahead, we invite industry leaders, innovators, and organizations to join us in this transformative journey. Together, we can build impactful collaborations, nurture talent, accelerate innovation, and create sustainable solutions that address the needs of industry, society, and the nation.

We look forward to deepening our partnerships and shaping the future together.

Best Regards,
Dr. Iven Jose
Director
Manipal Institute of Technology Bengaluru



Message from the Deputy Director

As a young and dynamic institution under the prestigious Manipal Academy of Higher Education (MAHE), Manipal Institute of Technology (MIT) Bengaluru is steadfast in its mission to nurture globally competitive professionals. With a future-focused curriculum, world-class infrastructure, and a culture that encourages innovation, MIT Bengaluru has already made its mark as a hub for excellence in engineering and technology education.

Our graduates are more than just technically proficient—they are problem-solvers, critical thinkers, and leaders equipped with a robust combination of technical expertise, inter disciplinary knowledge, and soft skills. As the proverb goes, “The future belongs to those who prepare for it today,” and our students are primed to meet the needs of forward-looking organizations striving to stay ahead in a rapidly evolving global landscape.

MIT Bengaluru takes immense pride in its ability to foster industry-ready professionals who are prepared to tackle real-world challenges with creativity and determination. Companies seeking to innovate in cutting-edge domains will find our students not just capable but transformative, embodying the adage, “Innovation distinguishes between a leader and a follower.”

We extend a warm invitation to corporations and industry leaders to visit MIT Bengaluru and engage with our vibrant talent pool. Together, let us create pathways for innovation and leadership that shape the future of technology and business.

Join us in building tomorrow, today.

**Best Regards,
Mr. Ekalavya Baruah Deputy Director -
Corporate Engagement Manipal
Academy of Higher Education**



Final Placement Highlights (2024-25)

The previous placement season witnessed strong participation from recruiters across diverse industries. Students secured opportunities with leading multinational corporations, technology firms, consulting organizations, financial institutions, and engineering companies.

180+
Total Companies

20+
Fortune 500 Companies

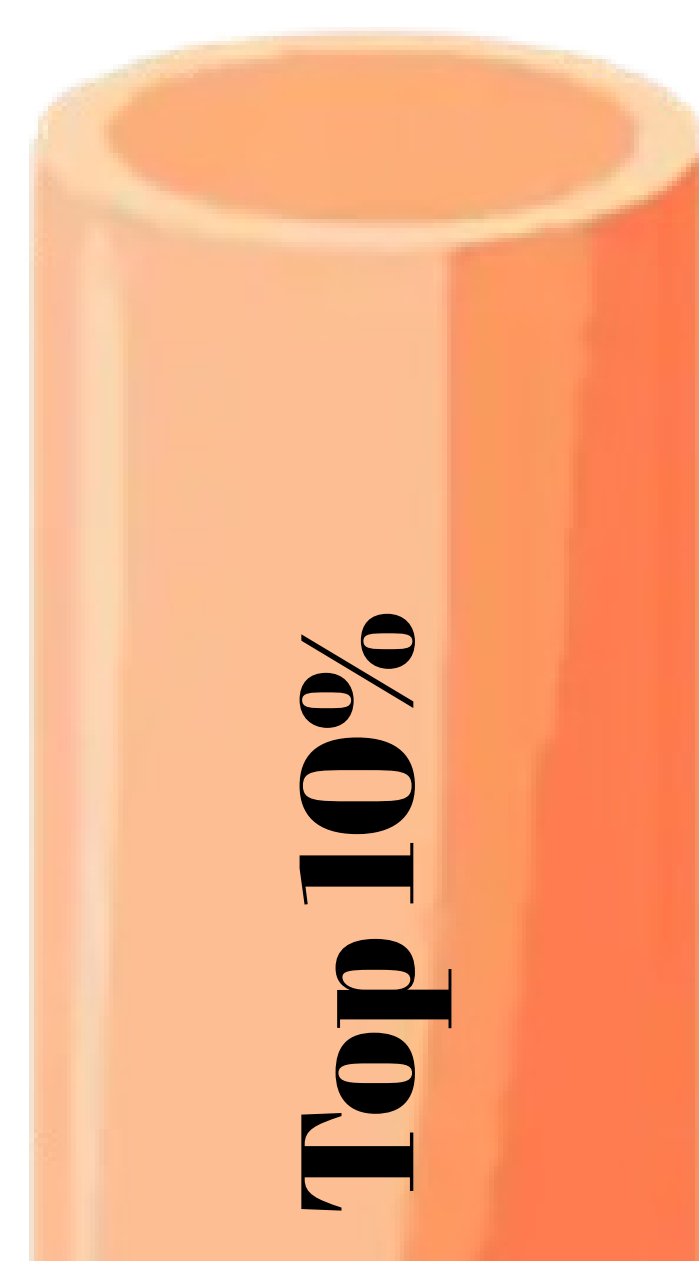
50+
New Recruiters

68.9 LPA
Highest CTC

11.7 LPA
Average CTC

10 LPA
Median CTC

18 LPA



15 LPA



9 LPA



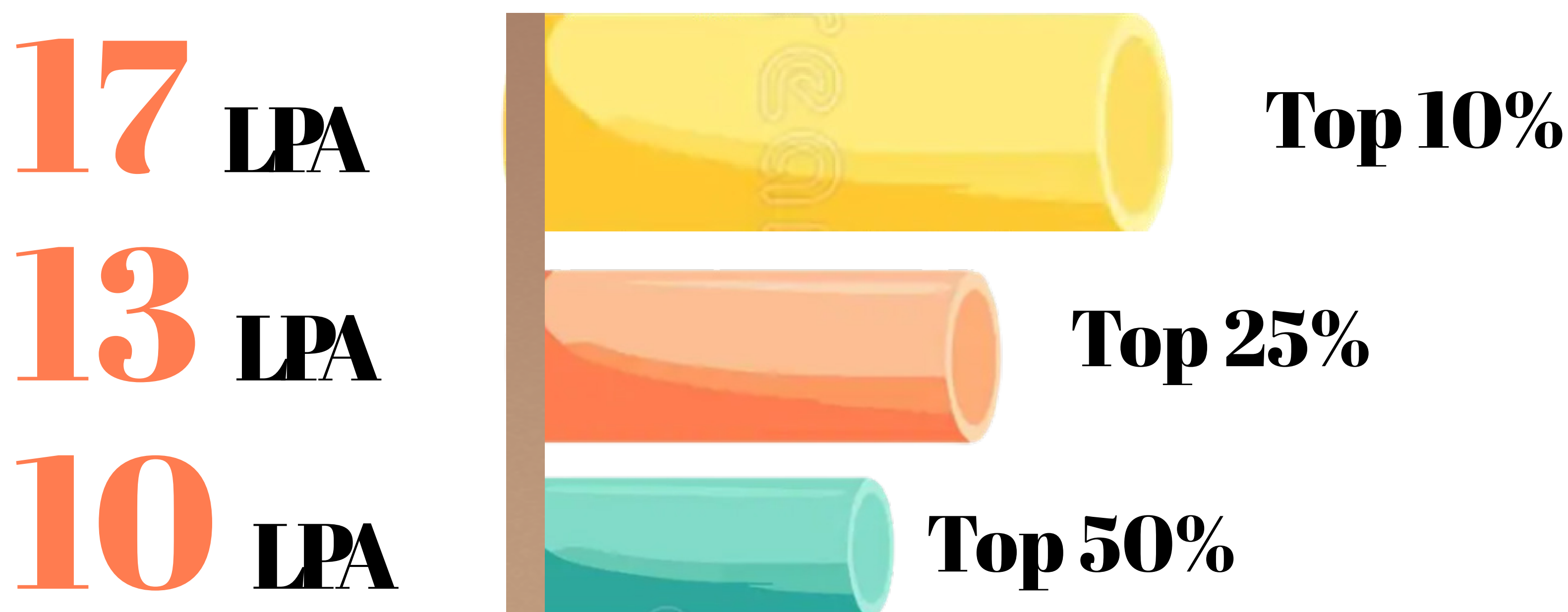
Interim-Final Placement Highlights 2025-26

The current placement season is progressing very positively and continues to gain momentum.

Key trends observed include:

- Increased participation from reputed recruiters.
- Hiring across emerging technology domains.
- Strong demand for talent in software engineering, artificial intelligence, machine learning, cybersecurity, analytics, product development, and consulting.
- Growing opportunities in both internships and full-time employment.

As the placement season is currently underway, placement numbers continue to improve, and the institute expects to surpass previous benchmarks.



Profiles Offered

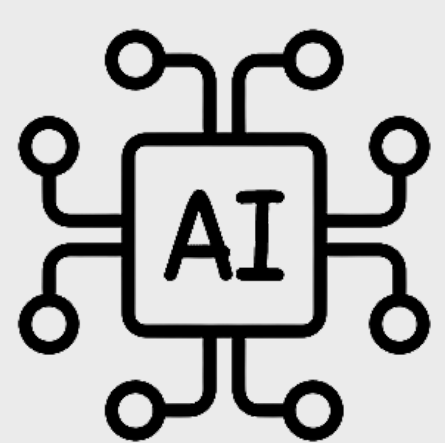
MIT Bengaluru students are recruited for a wide range of technical and business roles, including:

These opportunities provide students with exposure to cutting-edge technologies and challenging business environments across industries.

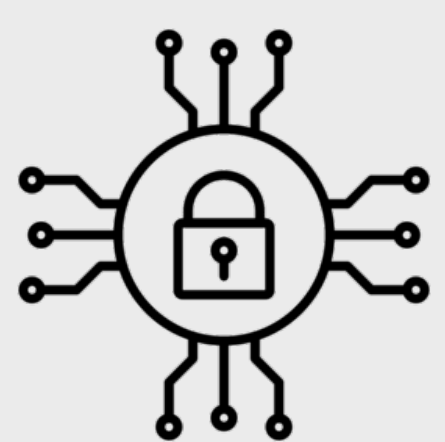


1. Software & Technology Roles:

Software Development Engineer (SDE), Full-Stack Developer, Cloud Engineer, DevOps Engineer, Product Engineer.

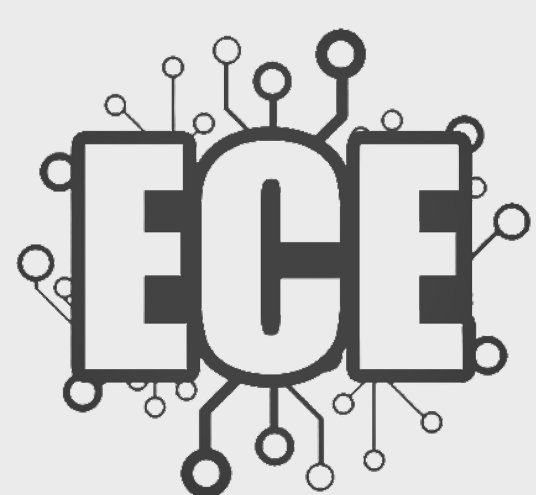


2. Artificial Intelligence and Analytics Roles Data Scientist, AI/ML Engineer & Business Analyst



3. Cybersecurity and Infrastructure Roles

Cybersecurity Analyst, Cloud Security Engineer



4. Electronics and Core Engineering Roles

Embedded Systems Engineer, Electronics Design Engineer,
Systems Engineer



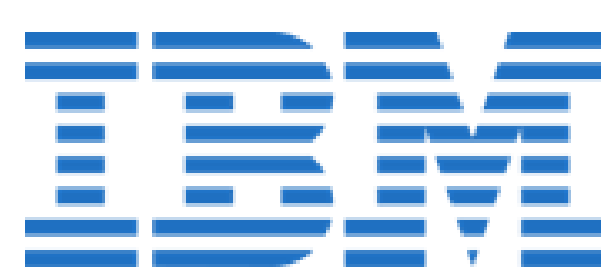
5. Consulting and Research Roles

Technology Consultant, Research Associate

Final Placement Partners



Final Placement Partners



A Note of Gratitude to Our Recruitment Partners.....

On behalf of MIT Bengaluru, I would like to express our sincere gratitude to all our recruitment partners for their continued trust, support, and collaboration.

Your commitment to identifying and nurturing young talent has played a significant role in shaping the careers of our students. Through internships, placements, industry projects, mentorship, and engagement initiatives, you have provided invaluable opportunities that bridge the gap between academia and industry.

We deeply appreciate the confidence you have placed in our students and the time invested by your teams throughout the recruitment process. Your partnership not only contributes to the professional growth of our students but also strengthens our mission of creating industry-ready graduates.

We look forward to continuing and expanding these meaningful collaborations in the years ahead. Thank you for being an integral part of the MIT Bengaluru journey.

With sincere appreciation,

Ekalavya Baruah

***Deputy Director– Corporate Engagement and Career Advisory Services
MIT Bengaluru / Manipal Academy of Higher Education***



Ekalavya Baruah
Deputy Director– Corporate
Engagement and Career Advisory
Services MAHE Bengaluru.

Dr. Iven Jose
Director– Manipal Institute of Technology
MAHE Bengaluru.